

Siincos Remote Connect

Cloud based remote access and monitoring solution for machinery, industrial automation, manufacturing plants and many more



Process Technology



Transportation



Power Generation



Civil

Key Facts



- Secure remote access and remote diagnosis of existing machinery and systems (e. g. industrial plants, vehicles, power generators, etc.)
- Remotely access PLCs, Touch panels and control systems for e.g.
 - Programming
 - Commissioning
 - Parameterization
- Managed Cloud: on-premise IT infrastructure and internal IT know-how not necessary
- Comfortable integration in new or existing systems



Integrated Solution 4.0 – from field to cloud



Gateway / Router



Cloud



Device Manager App



- Powerful hardware for use in harsh & industrial environments
- Gateway supports redundant internet connectivity over LTE, Ethernet or WLAN
- Cloud Managed – Comfortable access to your controllers & systems using the Siincos Device Manager App
- Comfortable integration in new or existing systems through standardized protocols: Ethernet and TCP/IP
- Extensible by software and apps developed specifically for remote management use cases ([read more...](#))

Solid System & Architecture

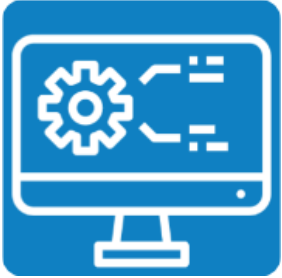


- Solid system architecture
- Outbound connections only
- Internet connection via mobile network (4G/LTE/5G) or existing LAN/WLAN
- Simplified management of larger installations through internal networking

Key Features

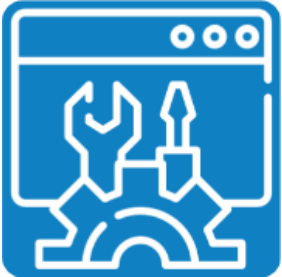


BENEFIT



- Remote maintenance, -access and -service reduces downtime of your (production-) systems
- Increased reaction time & customer support by saving travel time and costs
- Optimized pre-planning & enhanced efficiency for on-site service operations

FEATURES



- Cloud solution – no dedicated server infrastructure or internal IT experts required
- *Siincos Notification Service* delivers mail notifications to smartphone, tablet or notebook
- Smart service & fast expert support for several customers possible at the same time

SECURITY



- Encrypted connection between Siincos Gateways, Cloud and Device Manager
- Security-by-design and built-in firewall
- Multi-factor authentication / protected virtual networks
- Device authentication through security certificates

Siincos Device Manager – Groundstation



- *Siincos Device Manager* acts as the Ground Station for remote access
- Convenient management of Siincos RC gateways as well as connected controllers, HMI control panels and other peripherals
- Overview of plant locations on a geographical map - GPS receiver inside the Siincos gateways
- Access your PLCs, controllers and PCs with just a few clicks
- Clean overview of connected devices and their accessible services
- Integrated password manager for secure identity management
- Cryptography and user authentication is based on security certificates



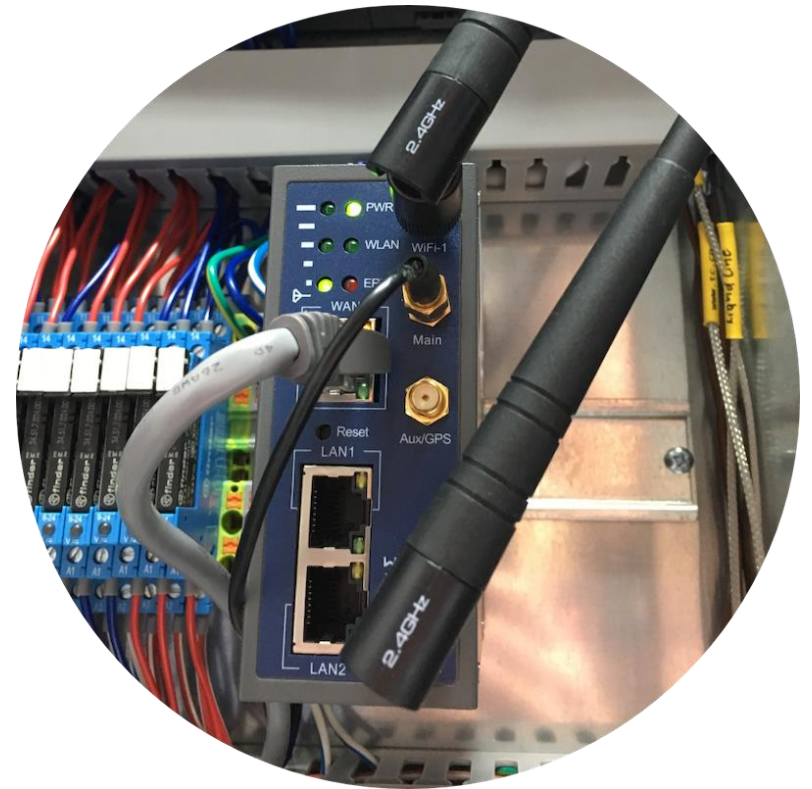
Siincos RC Device Manager - Remotely accessing a touch panel via VNC



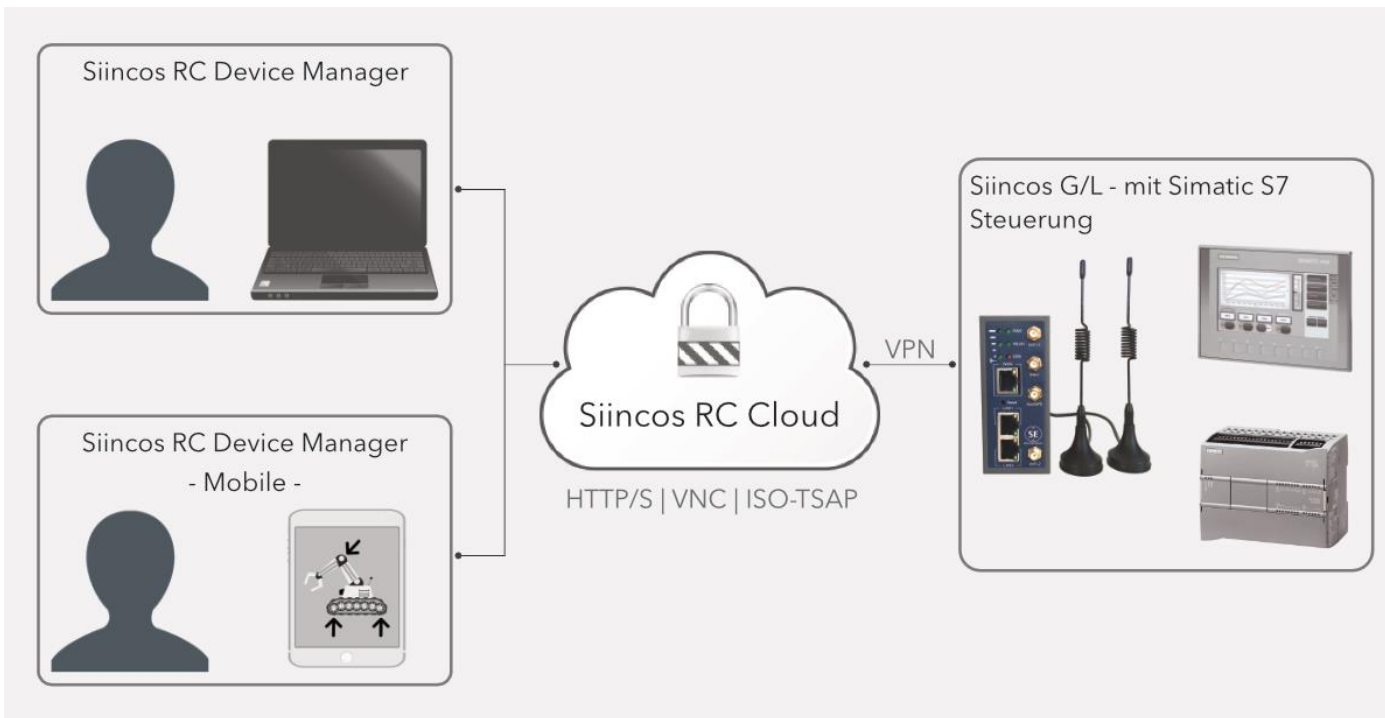
Siincos RC Gateways & Router



- Siincos gateways have an integrated GSM module for UMTS / LTE / 5G connectivity
- LAN / WLAN
- Integrated Firewall & Netfilter
- Wide voltage range for versatile applications: 7.5...32V DC
- GPS optionally available for geolocation
- Low power consumption and a wide voltage range - easy integration into mobile/off-grid and autonomous applications (220mA x 12V DC)
- [Read more...](#)

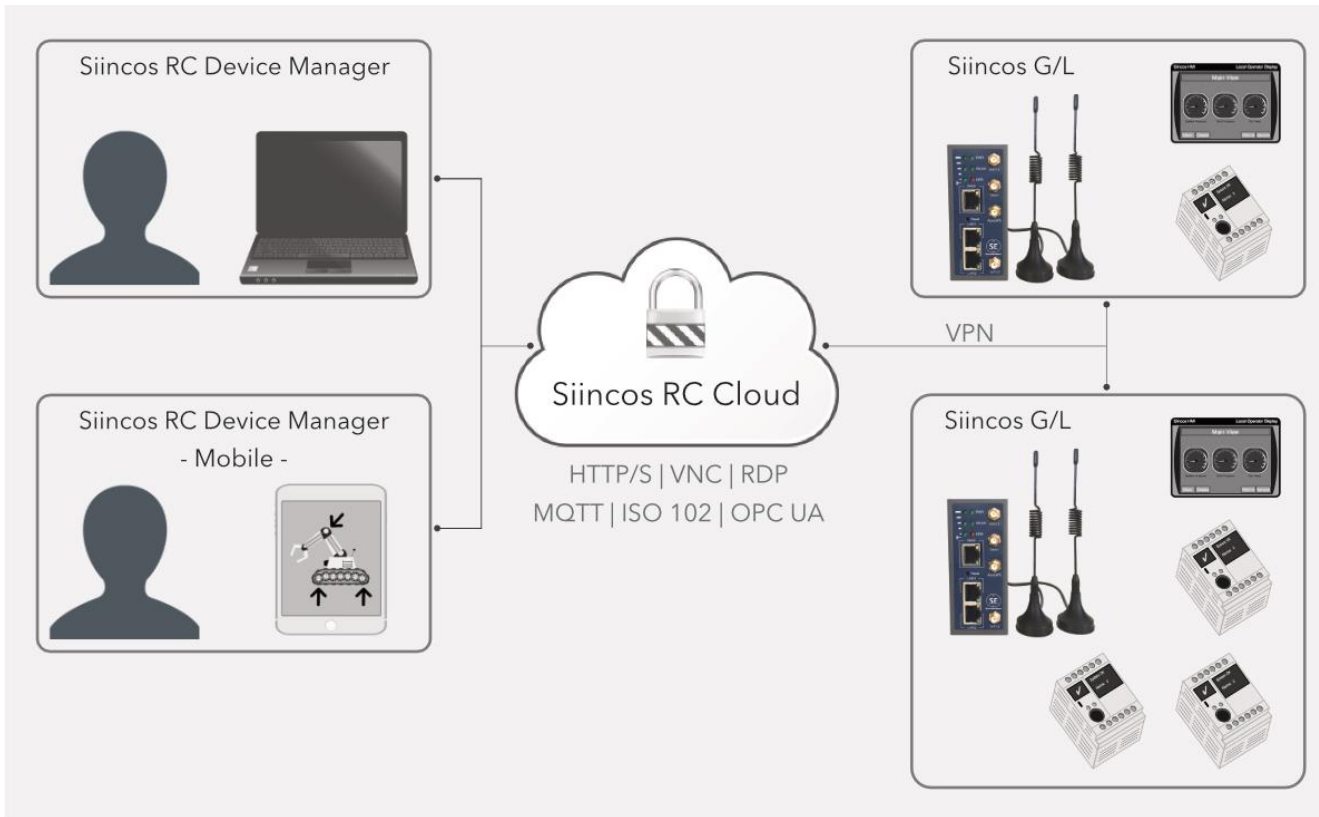


Example of use – PLC Remote Access



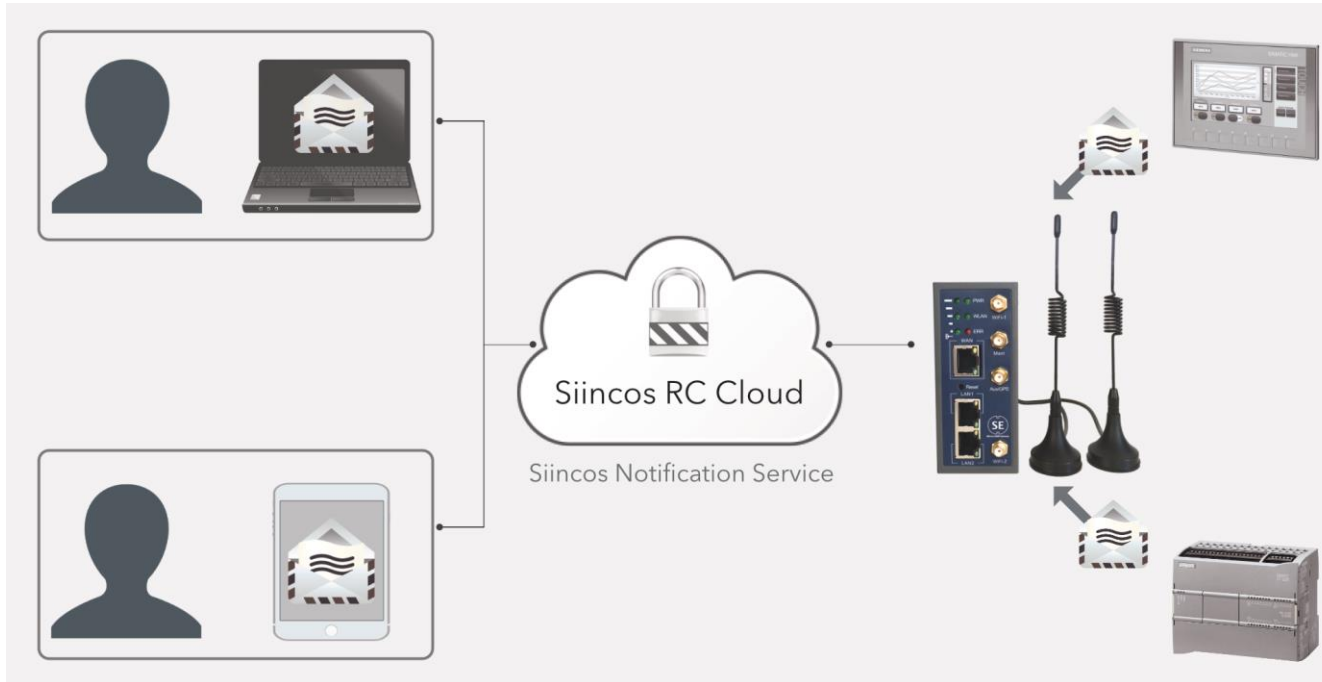
- Siemens Simatic S7-1200 and KTP400 Basic
- Connected via Ethernet / LAN to Siincos Gateway
- Internet connection via LTE / 4G
- Remote access via *Siincos Device Manager*
 - Sm@rtClient
 - Webbrowser
 - TIA-Portal
- Accessible services on targets:
 - Sm@rtServer (VNC) – KTP400
 - Webserver (https) – S7-1200
 - Online-Access (TSAP) – S7-1200

Example of use – PLC Data Access



- PLCs / ICS / HMIs provide endpoints and services:
 - ReST API (http/https)
 - OPC UA
 - ModbusTCP
 - SSH
 - Telnet
 - FTP / SFTP
 - Etc.
- Siincos Gateway provides encrypted tunnel for protocols and services
- Device Manager is tunnel-endpoint in local network and provides access to services running on PLCs / ICS / HMIs

Siincos Notification Service

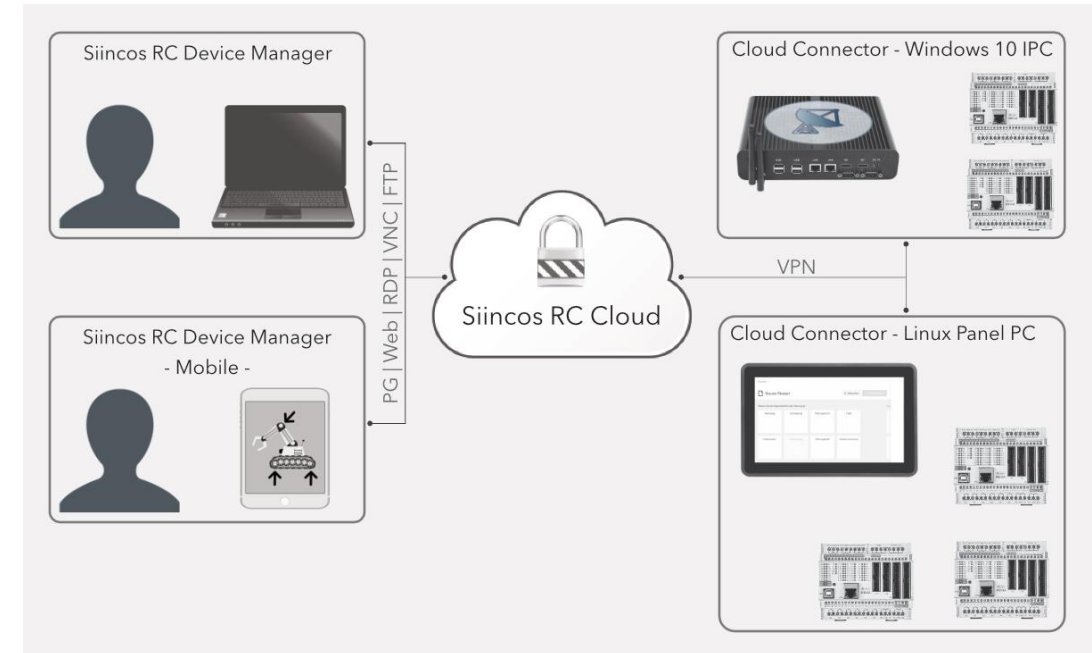


- Let your PLC send mail notifications about
 - Alarms & Warnings
 - System Health & Support Requests
 - Diagnosis & Maintenance
 - Etc.
- Mail is sent directly from the PLC / Panel / ICS
- Siincos gateway provides unified interface for mailing
- Mail delivery is done by Siincos Cloud
- Custom mail addresses according to customer's needs
- No usage limits

Cloud Connector WingX



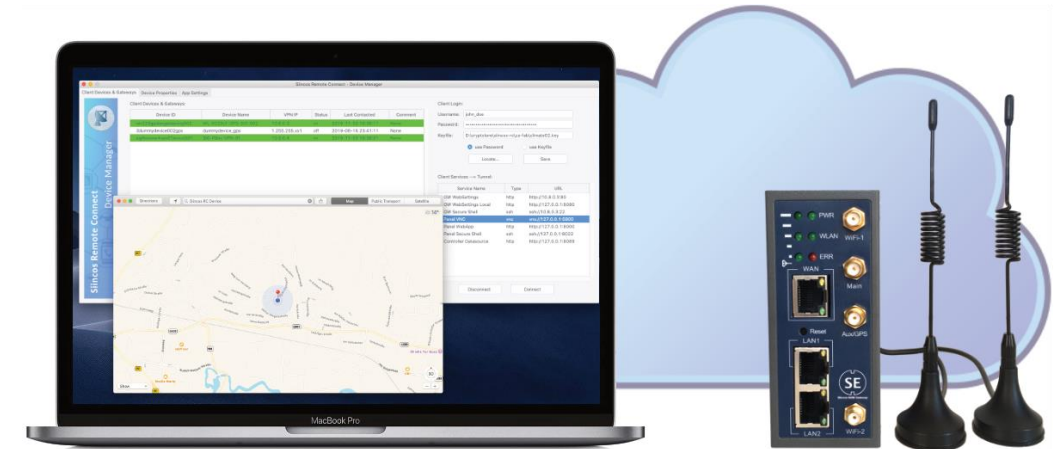
- Cloud Connector WingX – Remote access without gateway or router
- Extends industrial PCs to remote gateway
 - Industrial PC becomes tunnel endpoint
 - Direct access to Industrial PC (e.g. VNC / RDP)
 - Direct access to connected controllers / panels / etc.
 - Installation of programming software on industrial PC not necessary
- Industrial PC is visible in Device Manager with configured access points and services
- No additional gateways or routers required
- [Read more...](https://siincos-remote-connect.de)



Siincos Remote Connect – Summary



- Supports many industrial sectors, e.g. process engineering, power generation, transportation, public infrastructure
- Compatible with numerous PLC/PLCs, controllers, HMIs as well as embedded controllers and industrial PCs
- No limit on data volume, transfer rates, or number of connections
- Advanced IT security through end-to-end encryption & security-by-design



Safety & Security Standards

- Siincos hardware complies to the following safety standards:
 - CE Certification
 - DIN EN 301489 & DIN EN 55032
 - ETSI EN 301 908-1 & 301 908-2 & 301 908-13
 - ETSI EN 300 328 V2.1.1
 - IEC/EN 62311
 - DIN EN 61000-3-2 & 61000-3-3
 - DIN EN 55024
 - DIN EN 60950-1
- Siincos Remote Connect software components are compatible with the following security standards*:
 - ISO/IEC 27017 – Cloud Security
 - ISO/IEC 27033 – Network Security
 - ISO/IEC 27034 – Application Security
 - ISO/IEC 62443 – Information Security for Industrial Communication Networks and Systems
 - EU GDPR - General Data Protection Regulation (European Union Law)

* The above-mentioned IT security standards mainly concentrate on concepts and processes but rather less on specific product development. Therefore, the standards are mainly applicable for our software but need to be seen in the whole product lifecycle context. Please note, that proper IT security cannot rely on the products itself, we highly recommend to have a holistic IT security concept. We are glad to assist our partners/customers with this, for further details please contact us personally!





Engineering today...



...for a sustainable tomorrow

Spektrum Ingenieurgesellschaft mbH

Kinzigtalblick 12
63571 Gelnhausen

+49 6051 5388991

Mail: siincos@spektrum-engineering.de

Web: <https://siincos-remote-connect.de>



[linkedin.com/company/siincos/](https://www.linkedin.com/company/siincos/)



[instagram.com/spektrum.engineering/](https://www.instagram.com/spektrum.engineering/)

